

**KINDERGARTEN, 1<sup>ST</sup> AND 2<sup>ND</sup> GRADE  
PLAYING LEAGUE  
ALL GAMES PLAYED AT  
CORTE MADERA TOWN PARK**

**Split Model – Kindergarten & 1<sup>st</sup> Grade**

- 2 teams play in 2 simultaneous 3v3 mini games with no goalkeepers on adjacent fields
- Coach from one team and an assistant from the other team run one mini game, and the other coach and assistant coach run the second game
- Coaches remain off the playing field, and primarily coordinate substitutions and help keep the ball in play
- Coaches should have 4/5 balls at each game. When the ball goes out of bounds, a new ball is immediately rolled into play
- When a goal is scored, a new ball is immediately rolled into play
- No throw-ins, no goal kicks, and no kick-offs
- Just roll a new ball into play and keep the kids “Playing the Game”
- No score is kept – Cheer for a goal but get a new ball into play quickly

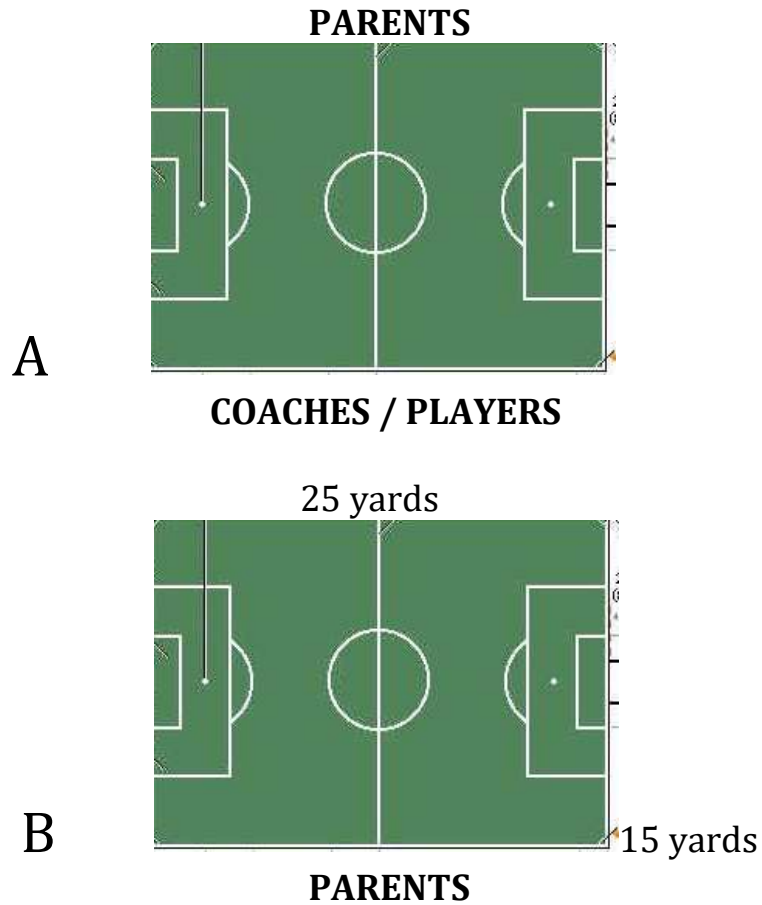
**Substitutes**

- On the fly – kids can come in and out anytime even during active play
- Keep the flow of the game going
- Kids coming out of the game, should get a short rest, then be sent into the other game

**Referees**

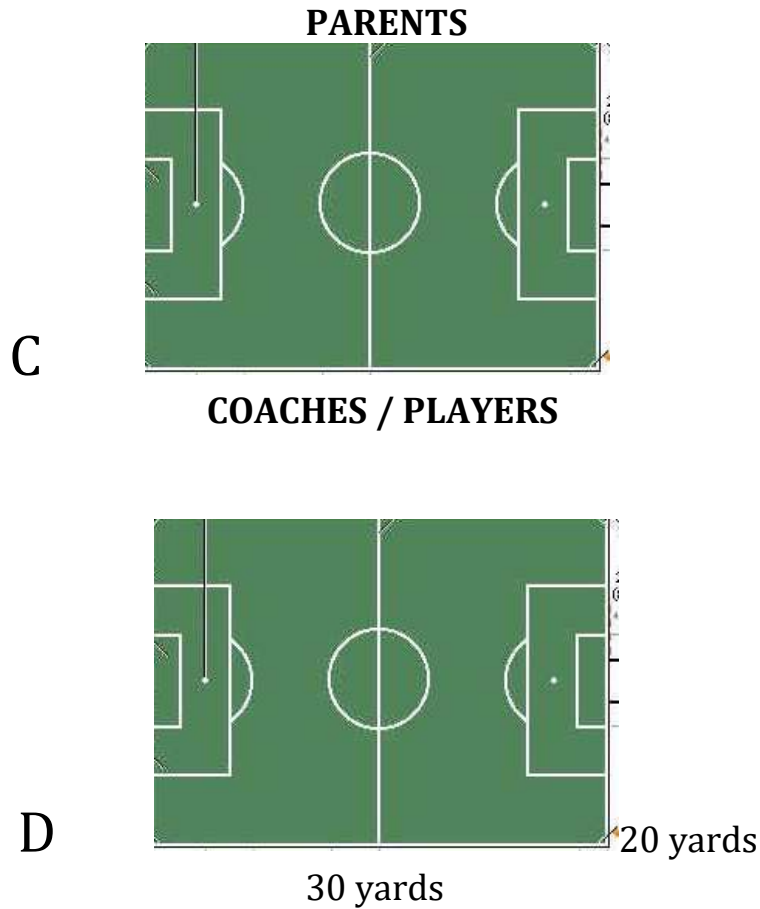
- None – Coaches will keep the time and call fouls
- If a “serious foul” occurs (which is quite rare), the coach should award an indirect free kick from the spot of the foul, but keep the game moving
- No basket hanging
- No offside

# Kindergarten



- Pop up goals
- Parents opposite side
- 3 – 10 minute quarters / 2 – 3 minute rest between quarters
- 3 v 3 / No Goalkeepers
- Split model for boys / and girls
- Coaches referee

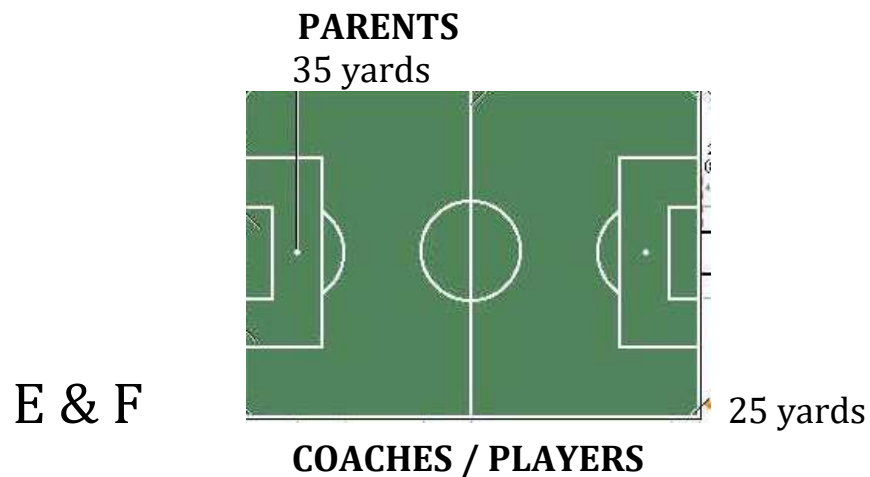
# 1st Grade



- Pop up goals
- 3 – 12 minute half
- 3v3 split model games
- No Goalkeepers
- Coaches referee
- Same as Kindergarten
- No offside

- Substitutions on the fly

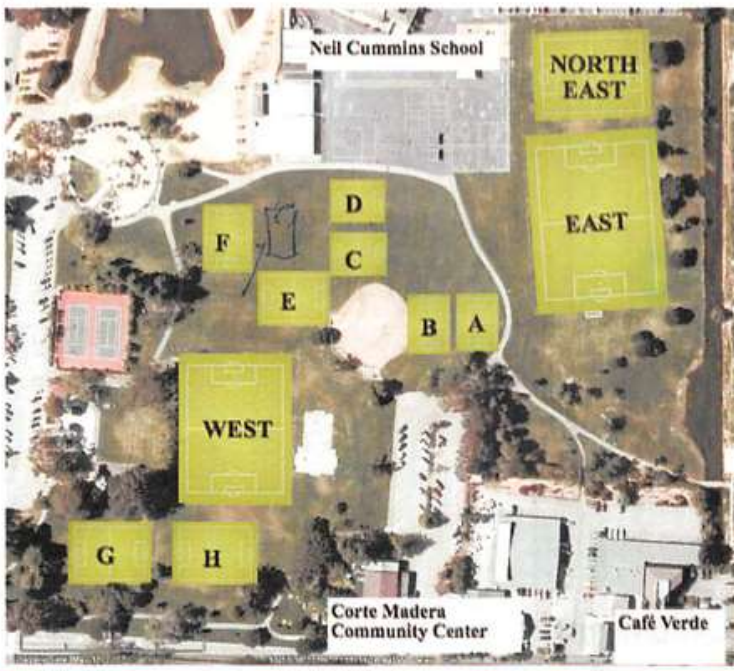
## 2<sup>nd</sup> Grade



- Pop up goals
- 2 – 20 minute half
- No Goalkeeper
- Coaches referee
- 4v4 single game
- Same as Kindergarten & 1<sup>st</sup> grade
- No offside
- Substitution on any stoppage of play

## FIELDS ( C )

Kindergarten - Field A & B  
 1<sup>st</sup> Grade - Field C & D  
 2<sup>nd</sup> Grade - Field E & F



## TOWN PARK CORTE MADERA FC SOCCER FIELDS

### FIELDS

A and B – Kindergarten

C and D – 1<sup>st</sup> Grade

E and F – 2<sup>nd</sup> Grade